

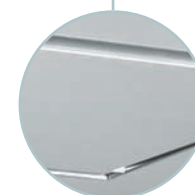
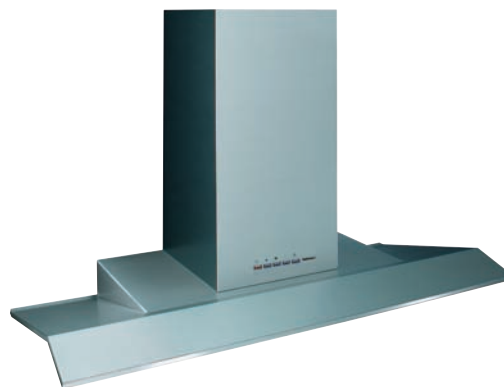
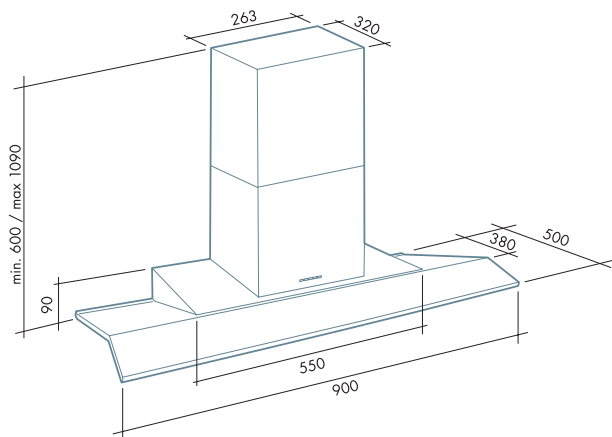
EXPO

Caratteristiche generali

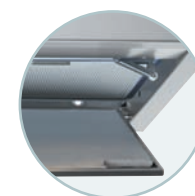
Struttura STRATOX® in alluminio anodizzato. Aspirazione perimetrale. Griglia metallica di protezione motore. Filtri carbone. Pulsantiera elettronica.

General features

Aluminium anodized STRATOX® panel structure. Perimeter suction. Motor protection metal rack. Charcoal filter. Electronic optical control.



Aspirazione perimetrale
Perimeter suction



Pannello fonoassorbente apribile ed asportabile
Opening and removable noise reduction panel



parete/wall
/
90
/

motore e comandi / motor and control			filtri / filters			illuminazione / lighting			
450 m³/h <u>3 vel.</u>	600 m³/h <u>3 vel.</u>	800 m³/h <u>4 vel.</u>	"Base"	"Design"	carbone/charcoal	Halogen lamp	Dicroica lamp	Incandescent lamp	Fluorescent lamp
	P.E.L.	P.E.L.	235 x 245 mm		3	2 x 20 Watt			

ACCESSORI OPZIONALI DISPONIBILI: Aspiratore sottotetto (solo versione 800 m³/h) - Aspiratore esterno (solo versione 800 m³/h) - Prolunga camino parete
AVAILABLE OPTIONAL ACCESSORIES: Under-roof extractor fan (only 800 m³/h version) - Outdoor extractor fan (only 800 m³/h version) - Wall chimney extension

EXPO

STRATOX

new
600 800



Stratofix